



# Larssen Sheet Piles and Piling Accessories

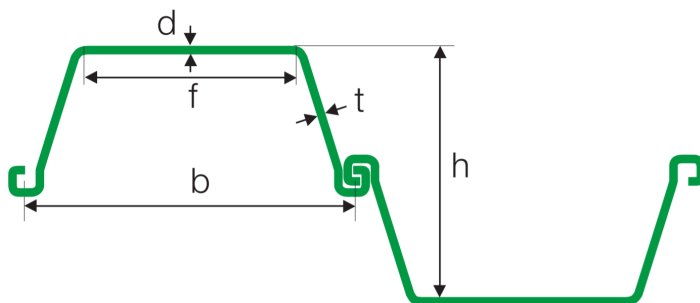


Steel sheet piles are used in a variety of applications from temporary or permanent cofferdams and retaining walls to marine works and foundation construction.

The pile sections are designed to be as light as possible without compromising strength and durability. The design of the interlocks offers a good degree of watertightness and aids pitching and driving.

Steel sheet piles and interlocking options

Larssen Sections	L602	L603	L604	L605	L606	L607
b (mm)	600	600	600	600	600	600
h (mm)	310	310	380	430	460	460
d (mm)	8.2	9.7	10.5	12.5	13.5	19
t (mm)	8.0	8.2	9.0	9.0	10.0	11.0
f - flat of pan (mm)	250	386	365	330	351	340
Sectional area (cm <sup>2</sup> /m)	116	136	157	177	202	243
Weight (kg/m)	54.6	64.8	74.5	83.5	95	114
Mass (kg/m <sup>2</sup> )	91.0	106.5	123.5	138.7	158.3	190.7
Com. Moment of inertia (cm <sup>4</sup> /m)	12,863	18,727	31,184	43,484	57,656	73,802
Section modulus (cm <sup>3</sup> /m)	830	1,208	1,641	2,023	2,507	3,209



Piletec stock a comprehensive range of heavy section profiles and lengths which are available for delivery to all areas of the UK

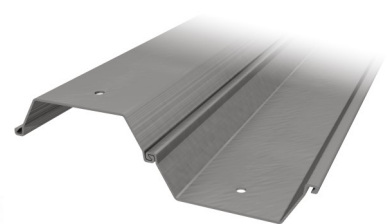
The correct choice of pile is very dependent on the steel strength, soil type and required penetration and these must be considered well in advance of the driving operation to ensure best results.

Dependent on ground conditions, consideration must be given to the length of pile to be driven, depth of penetration and ground loadings.

Interlocking Options	L602	L603	L604	L605	L606	L607
L602	✓	✓	✓	✗	✗	✗
L603	✓	✓	✓	✗	✗	✗
L604	✓	✓	✓	✓	✓	✓
L605	✗	✗	✓	✓	✓	✓
L606	✗	✗	✓	✓	✓	✓
L607	✗	✗	✓	✓	✓	✓



Ratchet Release Shackle



Interlocking Sheet Profile



Certification Number 14419  
ISO 9001 • ISO 14001 • ISO 45001

For practical and technical advice, please contact Piletec: FREEPHONE - 0800 111 4665

